

Ordering information

Type No.

2210 single or multipole thermal-magnetic circuit breaker

Mounting

S socket or panel mounting

Actuator design

2 toggle

Number of poles

1 1-pole protected

2 2-pole protected

3 3-pole protected

Panel mounting

1 with M3 thread

Terminal design (main contacts)

P1 blade terminals 6.3-0.8 (QC .250)

Characteristic curve

F1 fast acting: therm. 1.01-1.4xI_N; magn. 2-4xI_N DC (DC only)

F2 fast acting: therm. 1.01-1.4xI_N; magn. 3.5-6.5xI_N AC/ 4.5-8.5xI_N DC

M1 standard delay: therm. 1.01-1.4xI_N; magn. 6-12xI_N AC; 7.8-15.6xI_N DC

T1 delayed: therm. 1.01-1.4xI_N; magn. 10-20xI_N AC

M3 standard delay, low resistance: therm. 1.4-1.8xI_N; magn. 6-12xI_N AC; 7.8-15.6xI_N DC

Intermediate position

H without intermediate position (standard)

Z with intermediate position

Auxiliary contacts

1 with auxiliary contacts in all poles

2 with auxiliary contacts in pole 1 (only multipole devices) not suitable for Module 17plus

Auxiliary contact function (see diagram)

1 one each N/C and N/O (standard)

4 one N/C contact, closed in the intermediate and ON position (-Z only)

Auxiliary contact - terminal design

1 same as main terminals

Current ratings

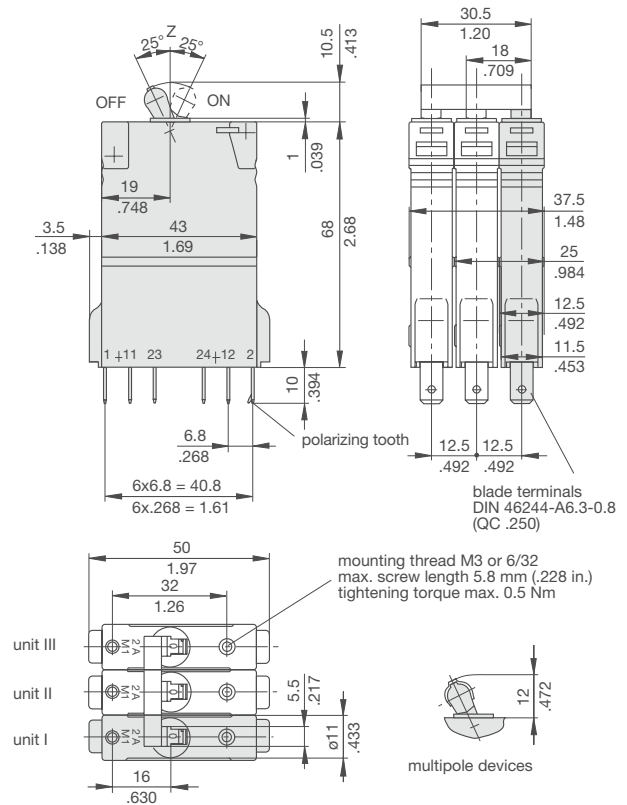
2210 - S

Preferred types

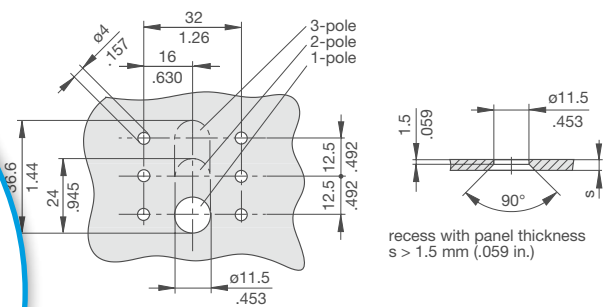
NEW

| Preferred types | Standard current ratings (A) | | | | | | |
|----------------------|------------------------------|---|---|---|---|----|----|
| | 1 | 2 | 4 | 6 | 8 | 10 | 16 |
| 1-pole: | | | | | | | |
| 2210-S211-P1F1-H111- | x | x | x | x | x | | |
| 2210-S211-P1M1-H111- | x | x | x | x | x | x | x |
| 2210-S211-P1M1-Z111- | x | x | x | x | x | x | x |
| 2-pole: | | | | | | | |
| 2210-S221-P1M1-H111- | x | x | x | x | x | x | x |
| 2210-S221-P1M1-H211- | x | x | x | x | x | x | x |

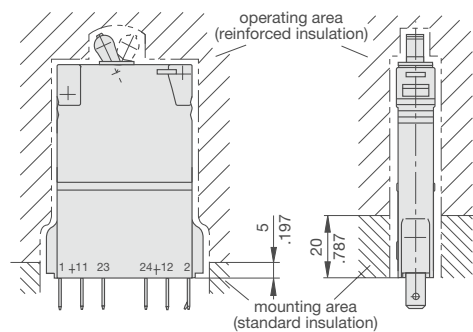
Dimensions



Cut-out dimensions



Installation drawing



This is a metric design and millimeter dimensions take precedence (mm/inch)